



INFINITY
MEP+S CONSULTANTS
BRINGING PASSION TO ENGINEERING

Healthcare Experience

BRINGING
PASSION TO
ENGINEERING

WWW.INFINITYMEP.COM

BRINGING **PASSION** TO ENGINEERING



WHO WE ARE

Founded by David Sinz PE LEED AP, Infinity MEP+S Consultants brings a passion to engineering, ensuring every client receives an exceptional collaborative & communicative experience. By combining our passion with our team's global experience, Infinity listens, adapts, and responds to the needs of our clients across a host of engineering disciplines.

Whether data centers, healthcare facilities, higher education, hospitality, commercial real estate or industrial projects, Infinity ensures our clients' success by providing the right team of engineers for every project we work on. With collaborative & experienced engineers across mechanical, electrical, plumbing, structural, technology, fire protection, and commissioning, Infinity brings the right team to every task for every need.

INFINITY MEP+S

OFFERING EVERYTHING YOU NEED

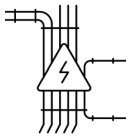
Our **multi-disciplined** approach creates a unique experience when you work with us; so whatever your engineering service needs are, we deliver. Infinity delivers across multiple discipline;



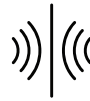
MECHANICAL ENGINEERING



FIRE PROTECTION



ELECTRICAL ENGINEERING



ACOUSTIC



PLUMBING ENGINEERING



LIGHTING DESIGN



STRUCTURAL ENGINEERING



REVIT AND BIM MODELING



TECHNOLOGY DESIGN



COMMISSIONING





OUR METHODOLOGY

Building on a foundation valuing responsiveness, experience, innovation, and attention to detail – our methodology is a holistic one which encompasses all aspects of a job. From initial scope of work to regional codes & guidelines to the evolving needs of the clients we serve, we practice diligence in decision-making throughout every design phase.



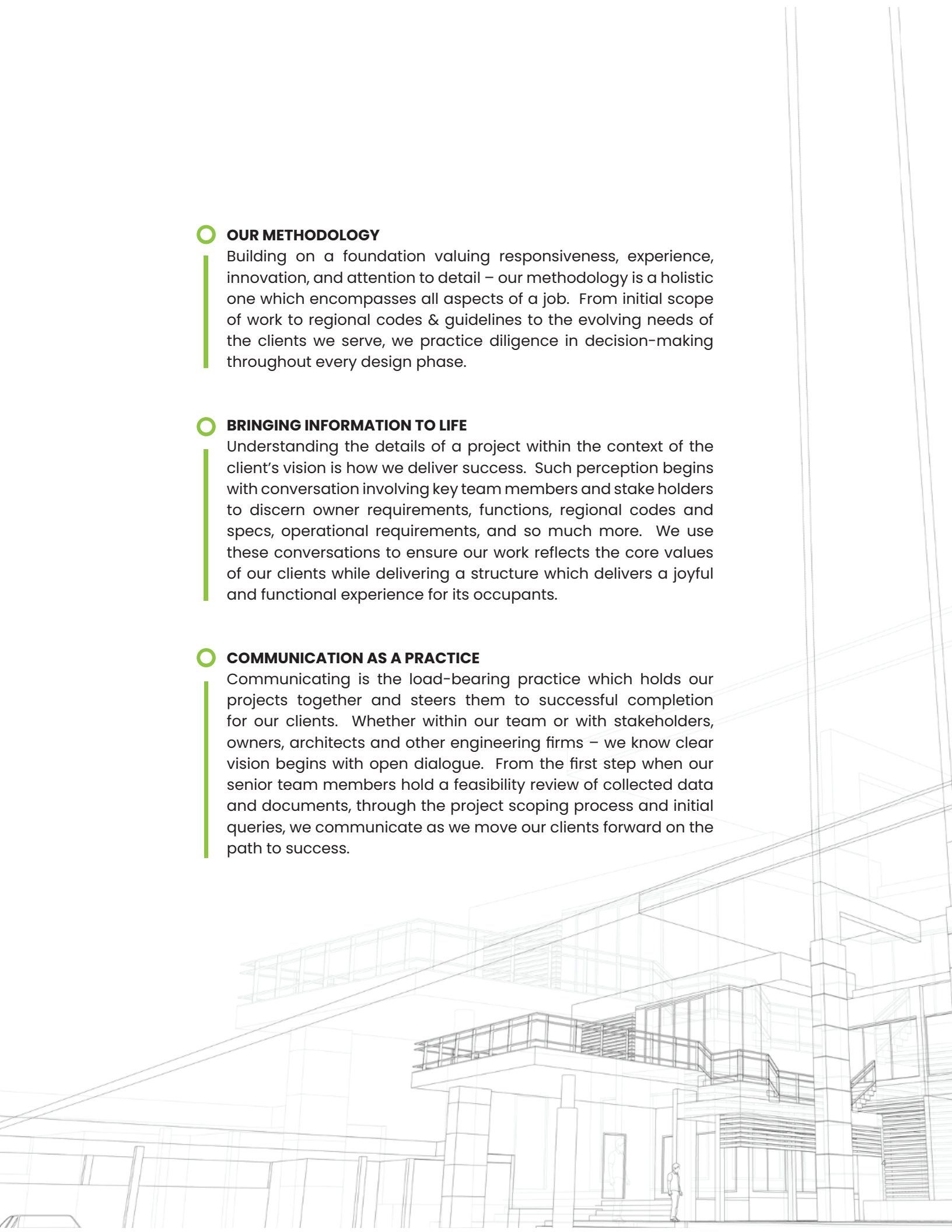
BRINGING INFORMATION TO LIFE

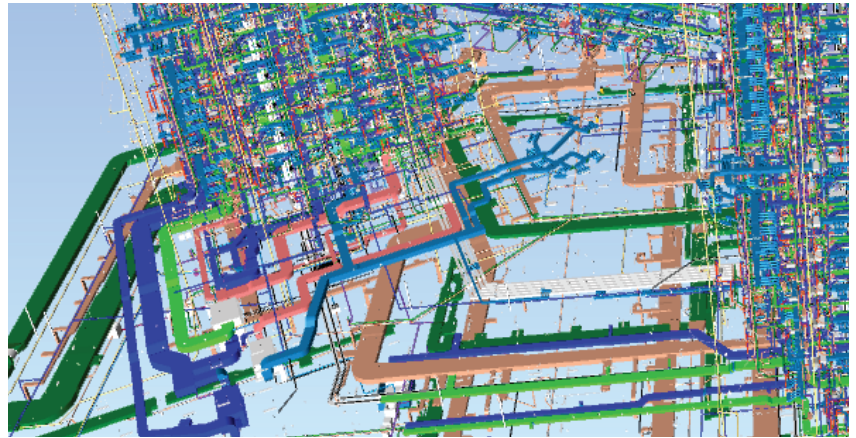
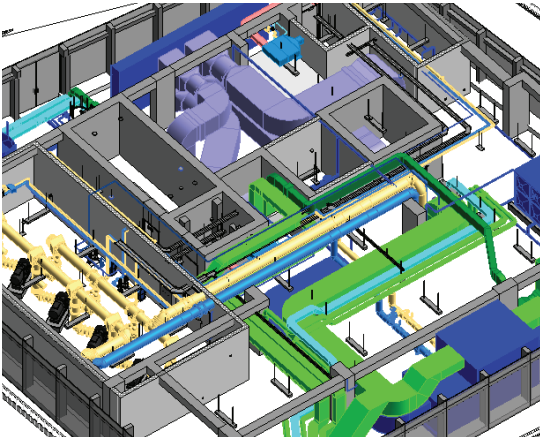
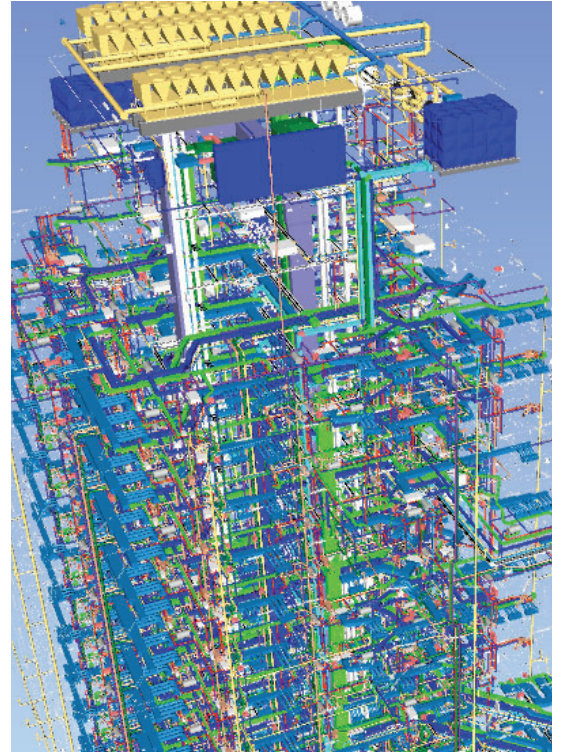
Understanding the details of a project within the context of the client's vision is how we deliver success. Such perception begins with conversation involving key team members and stake holders to discern owner requirements, functions, regional codes and specs, operational requirements, and so much more. We use these conversations to ensure our work reflects the core values of our clients while delivering a structure which delivers a joyful and functional experience for its occupants.



COMMUNICATION AS A PRACTICE

Communicating is the load-bearing practice which holds our projects together and steers them to successful completion for our clients. Whether within our team or with stakeholders, owners, architects and other engineering firms – we know clear vision begins with open dialogue. From the first step when our senior team members hold a feasibility review of collected data and documents, through the project scoping process and initial queries, we communicate as we move our clients forward on the path to success.



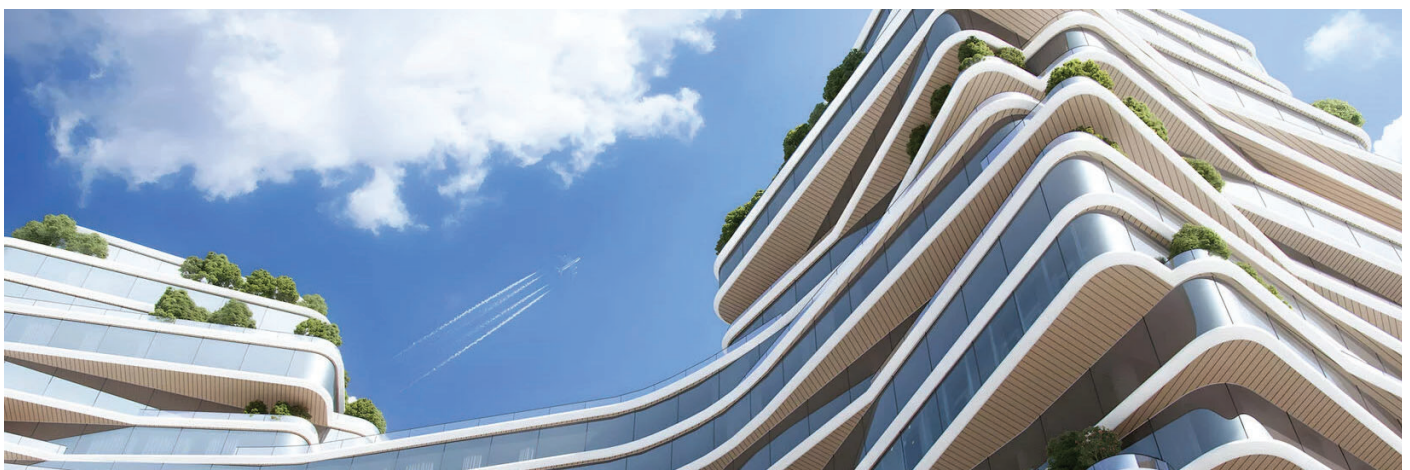


OCEANO REVIT Model

DESIGN

Infinity MEP+S provides world-class engineering services for all types of projects utilizing the latest in 3D design systems to integrate the engineering design into the architecture and structure of the building. These methods enable us to provide a cost effective and well-coordinated design, ensuring a smoother construction process.

INCLUDING REVIT MODELS IS OUR **STANDARD**



HEALTHCARE



Health and wellness is changing everyday to focus more on innovation and experience. Our Infinity MEP+S team is always ready to approach a project with creative implementation of our designed systems that will best serve the facilities, patients and personnel. Continually striving towards innovation and having access to the latest technology to drive that creativity positions the Infinity MEP+S team to serve this industry well.



LYNDON B. JOHNSON HOSPITAL

■ HOUSTON, TX

Our team is providing MEP and Fire Protection design services for the new Lyndon B. Johnson Hospital - a 1.2 million square foot, 12 story, 600-bed hospital with a Central Utility Plant (CUP) and a multistory mixed-use parking structure serving as the new Trauma Hospital for the Harris Health System.

The CUP will house a total of 9,000 tons of water-cooled chillers, cooling towers, 96 MMBtu condensing boilers, and related distribution pumps. Emergency power needs are addressed with the twin 2.5 MW diesel cogeneration system in tandem with up to four 2 MW natural gas generators. Medium voltage (10,200V) electrical service gears will also be housed in the vault located within the CUP. Sustainability is achieved using heat recovery bundles from the chillers and cogeneration system (which provide heating via the hot water circulation loop), in conjunction with the mechanical heating system. The facility includes a 200,000-gallon domestic water tank as well as tank storage for 48,000 gallons of diesel fuel - providing water and power for up to 72 hours in the event of public utility failure.

A unique parking structure will feature approximately one acre of urban garden space, a farmers market, and event space. Additionally, support for urban farming offices and retail areas will be located within the parking structure.

PROJECT DETAILS

CLIENT: Harris Health System

ARCHITECT: HKS, Inc.

SIZE: 1,200,000 SF Hospital

COST: \$1.5 Billion

COMPLETION: Est. 2028

SIGNIFICANT PROJECT FEATURES:

- \$150 MM Central Utility Plant (CUP)
- Two 2.5 MW Diesel Cogenerators
- Four 2 MW NatGas Generators
- 90,000 SF CUP
- 10,200V Electrical Service Gears
- 200,000 gallon Domestic Water Tank
- 48,000 gallon Diesel Storage Tank
- 9,000 tons of Water-Cooling Chillers
- 99 MMBtu Condensing Boilers
- 722,800 SF Mix-Use Parking Structure
- 600 Hospital Beds (90 Acute Care)
- BSL3 Isolation Rooms
- Trauma Center & Helipad
- Farmers Market & Event Space
- Urban Garden Space



UT MD ANDERSON CSC

HOUSTON, TX

Infinity MEP+S was engaged to help construct the new Central Service Center (CSC) for MD Anderson Hospital operations. We provided mechanical, electrical, plumbing, and technology designs in two phases.

The new CSC is situated within the Texas Medical Center Campus in Houston, Texas, and is meticulously designed to centralize numerous essential departments into a single state-of-the-art 380,000 SF facility.

The new CSC enhances space utilization & operational efficiency by offering secure, temperature-controlled storage for a wide range of hospital operation needs: hazardous materials, tissue storage, and non-hazardous materials. Additionally, a pharmacy, a sterile processing department, and a clinical research department will be housed here, along with a full-service kitchen catering to multiple MD Anderson facilities.

3D Energy Modeling services were also provided by Infinity for building geometry, HVAC systems, construction materials, and the calculation of internal load: thus enabling us to provide an analysis report and recommendations for selecting the most energy-efficient system based on MD Anderson design guidelines to help them meet LEED™ Silver standards.

PROJECT DETAILS

CLIENT: M.D. Anderson

ARCHITECT: Huitt-Zollars

SIZE: 380,000 SF

COMPLETION: 2023

COST: \$112 Million

SIGNIFICANT PROJECT FEATURES:

- Two 1MW Back-Up Generators
- 1,100 Ton Cooling Capacity
- 600 Ton Chiller Plant (Main)
- 500 Ton DX (Whse / Kitchen)
- 5,000 AMP Electrical Service
- 300,000 SF Facility
- Hazmat Chemical Storage
- Redundant IT / Telcom Feeds
- 3D Energy Modeling
- Designed in conjunction with LEED™ Silver guidelines



REUNION REHABILITATION HOSPITAL

■ PLANO, TEXAS

Joining BSA Life Structures on the developer-led Reunion Rehabilitation Hospital, Infinity provided MEP systems design for a 3-story, 51,300 SF, 48-bed hospital which included private rooms, two therapy gyms with advanced treatment equipment, outdoor therapy areas, isolation rooms, and a host of other amenities. Infinity MEP+S also was able to design for med-gas needs, technology for the nurse call system, a 500 KW emergency generator and all TDHS requirements.

The new, cutting-edge facility sits on a 2.5-acre site offering thorough inpatient physical medicine rehabilitation treatments to patients in the DFW area. From start to finish, the Infinity team worked closely with the client and BSA Life Structures to bring their design vision to life.

PROJECT DETAILS

CLIENT: Reunion Rehabilitation Hospital

ARCHITECT: BSA Life Structures

SIZE: 51,300 SF

COST: \$18 Million

COMPLETION: 2023

SIGNIFICANT PROJECT FEATURES:

- (3) Story Freestanding Hospital
- 500 KW Emergency Generator
- Med-Gas
- 48 Patient Rehab Beds
- Two Therapy Gyms



UT HEALTH SCIENCE CENTER

CENTER FOR ORAL HEALTHCARE & RESEARCH

■ SAN ANTONIO, TEXAS

The University of Texas San Antonio Health Science Center was in need of MEP design for a new Special Needs Ambulatory Surgery Center (ASC) for special needs clients at their Center for Oral Health Care.

Our team repurposed existing operatories for use by special needs clients. The initial concept envisioned by executive leadership was one of a combined waiting room which serves both ASC and operatories and we were able to bring their vision to life under tight design constraints.

PROJECT DETAILS

CLIENT:	UT Health Science Center
ARCHITECT:	Marmon Mok
SIZE:	10,000 SF
COST:	\$4.5 Million
COMPLETION:	2022

SIGNIFICANT PROJECT FEATURES:

- Converting research areas into surgical spaces
- Tight design conditions given space



UT HEALTH SCIENCE CENTER

PSYCHIATRIC CLINIC

■ SAN ANTONIO, TEXAS

The team was engaged to provide design engineering services to renovate the existing Medical Office Building space into a new psychiatric clinic for UTHSC in San Antonio, TX. The scope of the 5,000 SF, ground level interior renovation included mechanical, electrical and plumbing design engineering for offices, reception area, group counseling/ training room, vitals, breakroom, and restrooms.

The program type included design for spaces that included patients in the medium risk category. The design incorporated anti-ligature MEP devices and the New York state behavioral health standards, which is the industry standard of good practice for much of the country.

The team was also engaged to support through the Construction Administration (“CA”) phase. Our CA process involved prompt responses to RFIs, shop drawing reviews and coordination with the general contractor, architect, and end-user.

PROJECT DETAILS

CLIENT: UT Health Science Center

ARCHITECT: The Jordan Group

SIZE: 5,000 SF

COMPLETION: 2020

SIGNIFICANT PROJECT FEATURES:

- Renovation of a MOD space into a space for psychiatric clinical services
- “Medium-Risk” Patient Design
- Ligature-Resistant MEP Devices & systems



THE CENTER FOR HEARING & SPEECH

■ HOUSTON, TEXAS

The team was engaged to provide Mechanical, Electrical and Plumbing engineering services for the new Center for Hearing & Speech (“The Center”). The Center has been a resource for pediatric hearing loss for over 70 years – and this new location makes it possible to serve a greater number of patients while also offering more services in the years ahead.

Our MEP team worked closely with the architect and the end-users so that the requirements and designs of this comprehensive project were able to make the long-term vision of the client a reality. Project design services were inclusive of core & shell build-out of offices and classrooms, multiple clinical exam rooms, an IT room, and site lighting.

The approximately 50,000 SF medical and educational building is conditioned via HVAC systems incorporating ductwork, air devices, fans, and rooftop units. One design challenge was to ensure all noise-sensitive and vibration-sensitive areas within the project scope were isolated from the MEP systems given the sensitive nature of the work performed at The Center.

The team was very honored to work on a project that has made such a positive impact on the lives of so many here in Houston.

PROJECT DETAILS

CLIENT: Center for Hearing & Speech

ARCHITECT: Inventure

SIZE: 50,000 SF

COMPLETION: 2020

SIGNIFICANT PROJECT FEATURES:

- Core & Shell
- Exam/Clinic Rooms
- Site Lighting
- Noise & Vibration Sensitive Design



UT MD ANDERSON CANCER CENTER HAZARDOUS DRUG PHARMACIES (14 LOCATIONS)

■ HOUSTON, TEXAS

The team was retained to provide engineering consulting services to evaluate fourteen (14) hazardous drug pharmacies for MD Anderson. The pharmacies are located throughout the City of Houston on several MD Anderson campuses.

MD Anderson was upgrading their hazardous drug pharmacies to meet new, more stringent requirements based on US Pharmacopeia (USP) 797 & 800 standards. These pharmacies are where MD Anderson prepares chemotherapy drugs in hazardous & non-hazardous compounding rooms. We reviewed all Bio Safety Cabinet (BSC) configurations and airflow, as well as evaluated low return air configurations, Fan Filter Units (FFUs), Air handlers (AHUs), filtration systems, HEPA Filters, pressure differentials, pharmacy control systems and air flow analysis.

Going one step further, our team took air flow readings for all supply, exhaust, and return air grills. This allowed us to calculate actual room air flows to meet the USP standards. We also reviewed maintenance logs of the BSCs and HEPA filter change-outs to verify compliance. These findings were summarized on separate reports for each pharmacy, and were essential to the design workflow for each individual location throughout the project.

PROJECT DETAILS

CLIENT: University of Texas System

ARCHITECT: EYP Architecture

SIZE: 14 Pharmacies

COST: \$1.5 Million

COMPLETION: 2018

SIGNIFICANT PROJECT FEATURES:

- Pharmacy control systems and air flow analysis
- Hazardous Drug Handling
- Meet USP 797 & USP 800 Standards
- Fan Filter Units (FFUs)
- Air handlers (AHUs)
- Filtration systems



HEIGHTS HOSPITAL RENOVATION

■ HOUSTON, TEXAS

The team was retained to provide MEP services for this 6 story, 160,000 SF hospital renovation. The hospital, located in Houston's historic Heights neighborhood, has been in the area for over 30 years and has undergone numerous expansions and renovations over the years. The new owners were updating the existing facility to modernize it while bringing it inline for the current standards of healthcare.

The team had surveyed the hospital extensively and updated many of the MEP systems to facilitate the current codes and plan for any future updates on the near-horizon.

Our team worked closely with the electrical and mechanical contractors to solve numerous existing condition issues in order to incorporate a new design aesthetic. Working with the architect and owner, we became a proactive member of the team in order to facilitate the Texas Department of Health and Human services request and inspections which were ongoing throughout the duration of the project.

PROJECT DETAILS

CLIENT:	MCD Partnerships
ARCHITECT:	Diamond Development
SIZE:	160,000 SF
COST:	\$6.5 Million
COMPLETION:	2018

SIGNIFICANT PROJECT FEATURES:

- Complex Phasing & Retrofitting
- Occupied Space
- Central Plant Upgrade



CANCER CARE SPECIALISTS CLINIC

■ RENO, NEVADA

Our team provided mechanical, electrical, and plumbing systems for the renovation of a 13,000 SF build out. The renovation build out includes medical offices plus additional square footage as required for 2 Linear Accelerator (Linac) vaults. In addition to 2 Linear Accelerator Vaults the facility includes Magnetic Resonance Imaging (MRI) and Computerized Tomography (CT) rooms.

The facility renovation included new mechanical, electrical, and plumbing systems including generators for emergency power, HEPA filtration as required. The design team incorporated additional safety features into the Linear Accelerator Vaults for protection against seismic events.

PROJECT DETAILS

CLIENT: Quality Cancer Care Alliance

ARCHITECT: Energy Architecture

SIZE: 13,300 SF

COMPLETION: Currently in design

SIGNIFICANT PROJECT FEATURES:

- Renovation and Build Out
- 2 Linear Accelerator (Linac) Vaults



AUSTIN WELLNESS CENTER

■ AUSTIN, TEXAS

Our team is excited to work on this 2-story space utilized by Austin Wellness Collective in the great city of Austin, Texas. Infinity was tasked with the job of core and shell design, as well as interior buildout to provide a comfortable and safe space for individuals to come and seek health and wellness care from inter-professional collaborative care providers.

The interior design was done for the 1st and 2nd floor of the building, which includes, therapy rooms, office space, work rooms, coffee and breakrooms, massage therapy, sculpture laser rooms, locker rooms, a boutique, injection rooms, laundry space, and a Fotona laser room. The MEP design included HVAC systems, plumbing systems, fire protection, electrical systems, and coordination with other consultants.

All drawings were completed in Revit to further assist the coordination with other consultants. MEP calculations, preparation of construction drawings, assistance during bidding and construction on services were also performed for this new state of the art facility.

PROJECT DETAILS :

CLIENT: Austin Wellness Center

ARCHITECT: Tramonte Design Studio

SIZE: 14,779 SF

COMPLETION: 2023

SIGNIFICANT PROJECT FEATURES:

- (2) Stories
- Full MEP Design
- Interior Buildout



NUTEX HEALTH

■ SAN ANTONIO, TX

Our team is provided mechanical systems for the renovation of a 34,000 SF hospital. The renovation build out includes exam rooms, open offices, waiting area, restrooms, procedure room, private offices, lab, storage areas, X-Ray suite and MRI & CT suite.

All upgrades required to meet the TDHHS Specialty Hospital requirements including ductwork, air devices, packaged/split-systems, and exhaust fan.

The team was also engaged to support the project through the Construction Administration phase. Our CA process involved prompt responses to RFIs, shop drawing reviews and coordination with the general contractor, architect, and end-user.

PROJECT DETAILS

CLIENT: MLN Company

ARCHITECT: LK Design Group

SIZE: 28,700 SF

COMPLETION: 2024

SIGNIFICANT PROJECT FEATURES:

- DX equipment provided in lieu of chilled water systems to meet budgetary constraints



KUYA WELLNESS CENTER

■ AUSTIN, TEXAS

Our team was engaged to provide mechanical, electrical, plumbing, and construction administration services for the Kuya wellness center build out. The team worked closely with the client and Urban Foundry Architecture to bring the comprehensive vision to life.

The holistic healing center features float tanks, rooms built out for sound deprivation therapy and sound chambers, cold plunge therapy tubs, IV lounge sauna and centralizing environment that promotes peace and tranquility. The addition of a second floor build out to the original one-story building allowed space for offices and entertainment/event areas. Experience-forward art features like a fire pit and salt wall were also incorporated into the design.

The MEP systems were closely coordinated with the owner and architect to ensure the space maintained the holistic healing atmosphere and provided the a strict acoustic treatment to minimize sound transmission throughout the facility.

PROJECT DETAILS

CLIENT: Kuya

ARCHITECT: Urban Foundry Architecture

SIZE: 10,000 SF

COMPLETION: 2020

SIGNIFICANT PROJECT FEATURES:

- Sauna
- IV Lounge
- Sound-Sensitive Design
- Float Tanks



Infinity MEP+S Consultants has a long-standing relationship with our partner firm, Prestige Engineering Services. Together, we have been able to achieve a high standard of excellence through emphasizing a customer-focused culture where we listen first / design second. Our methodology is built upon a foundation that values responsiveness, experience, consideration of job specifications and regional differences, innovation, and attention to detail.

Prestige evolved from a strong relationship between Charles "Chuck" Pennington CxA and David M. Sinz, PE LEED AP & President of Infinity MEP+S, their own diverse backgrounds complementing and strengthening one another's storied skills sets. Our integrative partnership empowers us to offer our clients the most thorough and quality service across numerous disciplines backed by extensive experience.



AUSTIN

5316 W US Hwy 290 Service Rd.
Suite 480
Austin, TX 78735
Derek Gaskamp, PE LEED AP BD+C
Email: dgaskamp@infinitymep.com
Office: (210) 275-0898

DALLAS

5048 Addison Circle
Addison, TX 75001
Mridul Agrawal, Principal
Email: magrawal@infinitymep.com
Office: (469) 759 1329

DUBAI

Centurion Star Tower A
Office 1007, Port Saeed
Dubai, U.A.E.
Napoleon Soldevilla, ME
Email: nsoldevilla@infinitymep.com
Office: +971 (04) 234 4069

HOUSTON

10260 Westheimer Rd.
Suite 400
Houston, TX 77042
David Sinz, President
Email: jmiller@infinitymep.com
Office: (713) 429-4949

SAN ANTONIO

100 N.E. Loop 410
Suite 1375
San Antonio, TX 78216
Mick Mirande, PE RCDD
Email: mmirande@infinitymep.com
Office: (210) 275-0898